

# New Zealand National Bridge Congress 2016

September 24<sup>th</sup> to October 1<sup>st</sup>

Daily Bulletin 1

24<sup>th</sup> September

Editorial Staff : Nick Jacob & Mark Hangartner

## WELCOME TO THE NEW ZEALAND NATIONAL BRIDGE CONGRESS

It is great to be here back in Hamilton for a “long week” of bridge, 8 days for many, 9 if you are taking part in the Youth Teams or the Rubber Bridge competition. This Congress is certainly one of the highlights of our bridge calendar. The scene is set for what should be a fantastic week.

We have over 650 players taking part, well up on last year's 609. We extend our usual special welcome to those who have come from overseas. Although the vast majority of the near 80 players come from Australia, we have never had a longer list of countries represented: Argentina, Australia, Japan, New Caledonia, Sweden, Taiwan, Uruguay and USA. You are all most welcome. We love having you all. Please enjoy our Bridge Congress and our country.

By the time you read this, the bridge will have already started with the New Zealand Youth Teams, with 10 or 11 teams taking part this year. The Youth and their special events are a very important part of this Congress. We will be hosting a Youth Test between New Zealand and Australia alongside the final of the New Zealand Teams, 72 boards long. Both will be on BBO.

It is also excellent to welcome our international players back from Poland. Just about all the pairs in the four New Zealand teams will be competing here in Hamilton. That includes the Open and Women's teams who performed so well overseas. In that respect, it is especially memorable how for the first time, we not only had one but two teams in the knock-out stages of a World Championship. The performance of our Open Team in beating France and then giving a good account of themselves against Spain was wonderful. Then Ashley Bach and Michael Cornell won or came a very close second in the Open Pairs. They will, of course, be one of the favourites to win the New Zealand Pairs this year. Last year's winners Tom Jacob and Brian Mace, will be doing their best to ensure that does not happen.



The Daily Bulletin is extremely grateful to Babich Wines for their on-going sponsorship. Babich is a top quality New Zealand vintner.

**Babich Wines** has been voted amongst the world's **top 50 most admired wine brands** in a survey by Drinks International.

**MIDDAY SATURDAY.** Yes, that is a very important time this year as the New Zealand Open and Open Restricted Pairs are starting two hours earlier than in past years. We do not want any empty seats for the first two hours. This is to enable all players to have Saturday evening off and be fresh for a 10.00am start on Sunday morning, after losing an hour's sleep to the arrival of "summer time".

The program for this Congress is largely the same as for 2015. However, if you think your team will have an interest in the final stages of The New Zealand Teams, please see page 4 of the score booklets which every player should collect from the Bridge Reception desk. The quarter and semi-final stages have been changed to a "Round of Eight" played in two groups of four. Also, the method by which teams are divided after the Swiss Qualifying has changed.

We try to give players some evenings off. The only evenings when you are certain to be playing (assuming you play throughout) are Tuesday, Thursday and Friday though finalists in the Back To The Future Teams will play on Monday evening when there is also a fun "Goulash Pairs" event.

What has changed this year is the way you can enter events. You can still enter at The Bridge Reception Desk, located at the back entrance to the hotel but you can also enter all events on-line. If you do enter on-line, or indeed in person, please observe the "enter by" times listed on the website and which will be repeated in Congress Bulletins. Our directing and scoring staff still needs time to seat fields. We do not want anyone to miss out but please enter in plenty of time.

You may well have noticed one big change this year. We have new hosts as early this year, the Kingsgate Hotel was sold. This hotel has joined the Distinction Hotel group. In some respects, it is "business as usual" in that some of the hotel staff have remained including the most friendly and helpful "Front Desk Manager", Colin. However, there are already some changes which are certainly for the better. One is free wifi throughout the hotel. Some hotel wings are to be refurbished though the benefit of that will be for the 2017 Congress. We hope you enjoy your time in the hotel and will try out the food provided. The hotel staff will do what they can to make your stay most pleasant, whether you are staying in the hotel or are just here for bridge.

**The Congress Staff.** The organisers and all those involved in running the Congress are listed on the inside back cover of your score booklets. One of the great assets we have is continuity of those who work for your enjoyment. Indeed, the only "new faces" from last year are in welcoming back a couple of names who were missing either last year or in recent years. So welcome back Tony Morcom to the directing staff and Justin Siemelink who is the "Operations Manager". As always, it is a great pleasure to have our Australian representatives, Matthew McManus, a cool and very knowledgeable part of our directing staff, and Peter Busch, our Chief Scorer.

Two most important people, especially for those of you who are new to Congress, are Nola and Gwyn at the Bridge Reception desk. They will either answer all your queries or else will point you in the right direction as to where to get an answer. They also handle tournament entries, will find partners and teammates for you and generally are there at your service, and always with a smile.

During Pairs events, Judy Butler operates a special desk to handle scoring queries and adjustments. You will find that desk in the bar area.

As well as the staff, we have other players who help out. We have two Congress Recorders, Malcolm Smith from Hamilton and Russell Watt from Auckland on hand to listen to any problems you may have experienced at the table which are not director issues. In addition, each of our seven regions has an Appeals Advisor (refer page 5 of your score booklets) with whom you can discuss an issue which occurred at the table. They can listen and give good advice on whether you want to take the incident to a Chief Director's Review and then maybe to an Appeals Committee. You can speak to any Appeals Advisor, not just the one from your Region. Jimmi Wallis acts as the Appeals Advisor for overseas players. I am sure he would not mind me saying that when not at the table, he is one of those closest to the bar! I would also like to thank in advance all those who agree to be on one of the two Appeals Committees, chaired by Patrick Carter and Alan Turner.

It is neat to have Mark Hangartner back to produce the daily Congress Bulletins. He will be helped by Nick Jacob who will demonstrate how easy it is to produce interesting bridge articles while trying to win both our National titles. Good luck in all respects, Nick. We are sure everyone will find something of interest in the Bulletins, whether you like bridge articles, gazing at pictures of bridge players or just at lists of who did well or less well in every event. However, please share your own stories of success, maybe even of what went wrong, or just of general interest. Mark and Nick cannot be everywhere and they really would like your input, especially those who are not quite grandmasters yet. Even if you do not feel like writing about what happened, corner Mark or Nick and tell them. Don't say you do not know Mark. Leaving aside Blair Fisher (if that's possible!), he is just about the tallest one here. You cannot miss him. He'd love to hear from you.

We need you the players. We need all those who help and organize. We also need and value our sponsors. Thank you all for your continued contribution. Again, please refer to your score booklets, this time to the back cover, to see the various sponsors we have. I would just like to mention a new part of the sponsorship this Congress receives from The New Zealand Bridge Foundation. The Foundation has been sponsoring the Rubber Bridge competition for many years. As well, this year we will draw randomly five prize vouchers of \$200 each to go to Intermediate or Junior players at this Congress to further their bridge education in the next year. The Foundation is keen to see our players develop. Thus, these prizes, to be used for courses, bridge books etc, are to encourage existing players improve their knowledge.

There are a few do's and don'ts to observe whether this is your first New Zealand National Bridge Congress, your 31<sup>st</sup> or some number in between. Also, if you are from overseas, please take note of our "local rules" which may be a little different from what you are used to.



Please observe the requirements listed including the use of "stop cards" and of when and when not to alert a bid. Both procedures add positively to the way the game should be played. Also, it is a requirement for players to have a fully



completed system card for all of the 10A point or higher events. For 5A or lower events, only the

outer 2 pages of the system card need to be completed. Remember to announce the meaning of your partner's 1♣ and 1NT opening bids and to pre-alert any bid which the laws require, especially doubles.

We also have rules around psyching, which should be limited to one per partnership per session. Psyching is part of our game. Persistent psyching leads to implicit partnership understanding and must be disclosed. An undisclosed partnership understanding may result in a procedural penalty. Also, psyche forms need to be completed by the player involved.



One big “no no” is having your cell phone on in the playing room. Shut out that outside world for three hours.

Please be aware of session times. They are on the website, on the TV screens in the hotel corridor and in your score booklets. Be seated before the sessions are due to start. Relax. Meet your opponents. That's all part of a bridge congress.

So is competing. We can all be competitive and yet retain respect for all around us, our partner, our opponents and our directing and other staff. We want a friendly atmosphere at our Congress and we want your help in creating such an atmosphere at all times.

May you all enjoy your experiences at this Congress and achieve the aims and targets you may set for yourselves. If you do not quite achieve, I hope you will still enjoy trying. We will not all go home with the prize money but I hope everyone will go home with pleasant experiences.

*Richard Solomon, Chairman of The Organising Committee, New Zealand Bridge Congress.*



Connect to Distinction Public Wireless

Wait to be redirected to the login page

Then type the password “spring2016”



## SPEED DINNER MENU

Price: \$23.50 each item

### Day one

- *Chicken Curry and rice with Naan bread*
- *Fish and Chips, side salad, tartar sauce*
- *Bangs and mash with gravy*

### Day Two

- Roast chicken thigh, peas, mash and gravy
- Beef schnitzel (180grams) chips and gravy
- Penne pasta with bacon, mushroom, capsicums creamy tomato sauce

### Day Three

- Roast pork, roast potatoes, honeyed carrots and gravy
- Beef lasagne, chips, and iceberg mixed salad
- Beef burger and chips ( plus vegetarian )

### Day Four

- Butter chicken rice and Naan Bread
- Spaghetti and meat balls with a tomato concasse sauce
- Steak and cheese pie, mash with butter peas and glazed carrots

**All items come with an Ice Cream dessert**

But today let's focus on youth

# Bid the right slam

<b>BD: 14</b>	♠T952	<b>Dir: E</b>
	♥KQ982	<b>Vul: None</b>
	♦A4	
	♣84	
♠AKQ4		♠
♥T4		♥A653
♦QJ76532		♦KT8
♣		♣AKQJ97
	♠J8763	
	♥J7	
	♦9	
	♣T6532	

NORTH	SOUTH	EAST	WEST
Pass	Pass	1♣	2♠
3♦	3♠	5♦	Pass
6♦	X	=	

You want to be in 6♦ as the Yan team was. Not the 6♣ contract played by a Coutts team pair.

NORTH	SOUTH	EAST	WEST
Pass	Pass	1♣	Pass
1♦	1♥	X	Pass
2♥	Pass	6♣	=

The lead: against 6♣ lead of 9♦ but it doesn't matter what you lead (except a trump) as declarer always has a trump loser. Against 6♦ declarer needs to be careful on a heart lead to pitch the heart loser on a club before drawing trumps.

Zachary Yan, Howick



Kevin Guan, Howick



Nicholas Yao, Howick



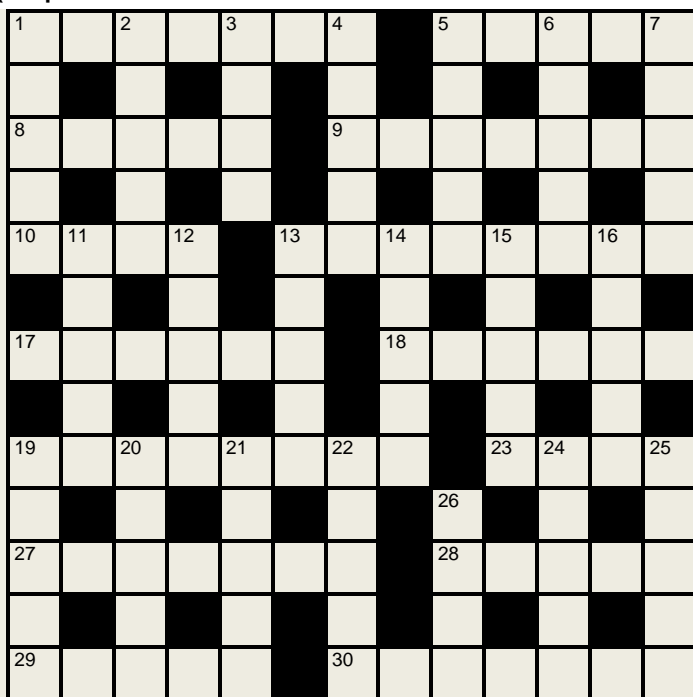
Vincent He, Howick



Doubling has been a big feature, in the match I watched there were 5 contracts doubled and one redoubled. 5 of the 6 contracts made.

# See if you can complete this crossword.

A bottle of wine for the best entry (or a draw of correct entries) submitted by end of play Wednesday. The winner will be announced Thursday morning. (copies will be available from outside the editors' door).



## Cryptic with Bridge sub-theme

~ ~ ~  
by Kropotkin

### Down

- 1 Digger initially digs into peas: they get mashed (5)
- 2 Modify rope for animal – remove the hard bit (5)
- 3 This person drummed up lots of followers? (4)
- 4 Pukemanu chap revealing the nape of his neck (5)
- 5 Old Spectator columnist appears in this bridge club (5)

### Across

- 1 Be a guest on an island (7)
- 5 Play with gusto (5)
- 8 A short way to drive along, or perhaps some turf (5)
- 9 Actor and director in feature about a pro-gramming language (7)
- 10 Friends asked to lend them are so upset, though nothing is lost (4)
- 13 Where this is being done on the spot (8)
- 17 Monty had one old jacket, not a kind of shirt (6)
- 18 Black and green mixture (6)
- 19 Gym exercise for one of the Jeremys: Mike dropped out? No good! (4,4)
- 23 The beginning of ardent love for Indigo (4)
- 27 Paul, famous horse rider, clutches end of reins (7)
- 28 Room on board for 737 passengers here? (5)
- 29 No nuts for Rover! (5)
- 30 Very smelly and insidiously furtive all round, but built so soundly (7)

- 6 Like the Homer tunnel until repaired (5)
- 7 Some saw 'X' on TV? Throw TV out! (5)
- 11 Fellow in Accident & Emergency – he lives there! (5)
- 12 Boats all at sea, so one goes on foot (5)
- 13 Carrion-feeder bird eating the last piece of artery and then the first (5)
- 14 A VIP (Rex Bishop) getting into fighter plane (2,3)
- 15 Poet left, followed by Rings villain on attack (5)
- 16 A reason to believe this murder evidence will show signs of daggers (5)
- 19 The drinking venue no drunk would be seen following! (5)
- 20 Dice game in which you enter bearing egg (5)
- 21 Greek lover died for King, but not his (5)
- 22 Have some brassica in Edinburgh, New England, and, oddly, in El Paso (5)
- 24 Person of wealth goes in here – I would go after him? (2,3)
- 25 He ran Knight's wife around the centre of Parnell (5)
- 26 After the onset of arthritis, two old Kings lack energy (4)



# Pictures of youth teams

Bradley Johnston, Otago



William Han, Howick



Samuel Coutts, Otago



Sam Bailey, Otago



William Harlow, Waikato



Jonah Franke-Bowell, Waikato



John Voss, Waikato



Gabriel Pan



Flora Edwards, Kairangi



Alice Watts, Kairangi



Clinton Scott, Kairangi



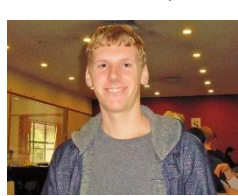
Georgia Wang



Jeremy Fraser-Hoskin, Auckland



Jacob Kalma, Te Aroha



Adrian Wisse, Te Aroha



Charlotte Jager, Te Aroha



Zachary Yan, Howick



Kevin Guan, Howick



Nicholas Yao, Howick



Vincent He, Howick



Sheryl Luo, Howick



Tim Pan, Howick



Yiwei Qj, Howick



Hans Santoso, Howick



Daniel Ahn



Paul Crosby,  
Waikato



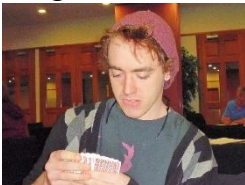
Andi Boughey,  
Akarana



Harrison Fulton,  
Franklin



Glenn Coutts,  
Otago



Mike Cui



Stephanie Crosby,  
Waikato



Sapphyre Mercer, Waihi



Russell Pearce,  
Palmerston North



Jamie Thompson,  
Australia



Kevin Guan



Matthew Brown, Akarana



Mackenzie Rhodes, East  
Coast Bays



Rodrigo Garcia Da Rosa,  
Uruguay



Vicki Bouton, Otago



Darsh Chuadhari



Daniel Spencer,  
Hamilton



Rebecca Wood,  
Akarana



Max Newton,  
Akarana



Blair Fisher,  
Hamilton



## Alerting

Players are reminded that they should pre-alert when they meet to play a round or a match.

Overseas players should note that 2♣ simple stayman and 2♦ response denying a 4 card major should not be alerted. They are considered to be self-alerting. Any other use of 2♣ over 1NT must be alerted.

Likewise, 2♣ Game Force opening bids (and 2♦ negative responses) are considered self-alerting and should not be alerted.

Players must alert any bids which are conventional, are not self-alerting and have not been pre-alerted.

## Psyches

A psyche is a deliberate and gross misrepresentation of your high card strength and/or the length of one of your suits. Note that the key words are “deliberate” and “gross”. To make a wrong bid accidentally is not a psyche - it is not deliberate. To shade an opening bid by a couple of points is not a psyche - it is not gross.

Psyches are an integral part of the game. As long as you do not psyche persistently, you are allowed to psyche. In New Zealand, to psyche more than twice in a session is defined as psyching persistently. To guard against this, a psyche register is in use at Congress.

If you psyche then you should collect a psyche form from the hand records rack by Congress desk. You complete the form and hand it to a director within 30 minutes of the conclusion of the session in which you psyched. If you are unsure as to whether your bid was a psyche then seek a director's ruling as the penalties for failing to report a psyche are severe. On the first occasion of failure to report, you can be fined upto 5% or 15 imps. If the offence is repeated then you may well be asked to leave Congress.

If someone psyches against you, then you may check on its being reported by asking a director to check for you.

## Stop Cards

Players must use a stop card whenever they make a skip bid.

The stop card should be placed in front of their LHO before making the skip bid and after allowing time for any alert and for questions from the LHO, the card should remain in place for approximately 10 seconds.

Failure to follow the procedure may be taken into account by the Director when assessing what action to take under Law 16B.

## Systems Cards.

NZ Bridge regulations require a fully completed NZ Bridge System Card to be carried and available for inspection by their opponents or the Director at all 10A or higher Tournaments.

NZ Bridge regulations require a NZ Bridge System Card, with the outer 2 pages completed, to be carried and available for inspection by their opponents or the Director at all other Tournaments.

An appropriately completed ABF Standard System Card is the only other permitted system card

## LUNCH MENU

PRICE: \$12 PER PERSON



### Burger Bar

Beef Patties  
Hoki Fry Fillets crumbed  
Burger Buns (toasted)

#### Fillings

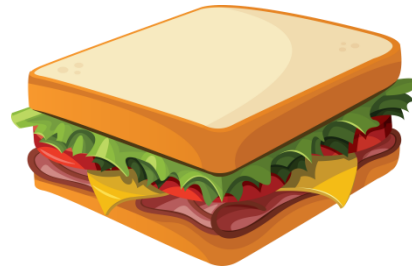
- Sliced tomato
- Sliced beetroot
- Grated cheese
- Sliced red onion
- Grated carrot
- Sliced lettuce
- Red and green cabbage mixed with mayonnaise
- Sliced cucumbers

#### Sauces

- Mayonnaise
- Tomato sauce
- Honey mustard sauce
- BBQ Sauce

## LUNCH MENU

PRICE: \$12 PER PERSON



### Sandwich Bar

Roast beef sirloin (Hot carvery)  
Ham on the bone (Hot carvery)  
Home baked bread

#### Fillings

- Sliced tomato
- Sliced beetroot
- Grated cheese
- Sliced red onion
- Grated carrot
- Sliced lettuce
- Red and green cabbage mixed with mayonnaise
- Sliced cucumbers

#### Sauces

- Mayonnaise
- Tomato sauce
- Honey mustard sauce
- BBQ Sauce

The final pages will show the seating plan for

Page | 12

# New Zealand Pairs Draw round 1

## Session 1      Session 2

Abraham	Adrian	Oberdries	Tony	Grey	N/S	1	Green	E/W	1
Ackerley	Chris	Russell	Douglas	Green	E/W	3	Buff	N/S	3
Alam	Faisal	Hsu	Gina	White	E/W	7	Grey	N/S	7
Andrews	Pauline	Barnard	Janet	Grey	N/S	9	Green	E/W	9
Appleton	David	Coles	Brad	Buff	E/W	2	Orange	E/W	2
Armstrong	Lucie	Harris	Rodney	Green	E/W	10	Buff	N/S	10
Asakoshi	Kotomi	Takeuchi	Hideko	Green	N/S	3	Green	N/S	3
Ashton	Wendy	Peake	Andrew	Grey	E/W	13	Buff	E/W	13
Atkinson	Julie	Carter	Patrick	Blue	E/W	8	Orange	N/S	8
Bach	Ashley	Cornell	Michael	White	N/S	2	White	N/S	2
Bach	Peer	Lichtnecker	Setsuko	Green	E/W	12	Buff	N/S	12
Bailey	Sam	Coutts	Samuel	Buff	N/S	11	Blue	E/W	12
Bannatyne	Pam	Nicol	Judith	Grey	E/W	6	Buff	E/W	6
Barnard	Janet	Andrews	Pauline	Grey	N/S	9	Green	E/W	9
Barnes	Ed	Mulley	Chris	Orange	E/W	2	Grey	E/W	2
Beale	Philip	England	Michelle	Orange	E/W	15	Orange	N/S	15
Benham	Peter	Cleaver	Brian	White	E/W	4	Grey	N/S	4
Bennett	Arthur	Bennett	Gillian	Grey	E/W	2	Buff	E/W	2
Bennett	Gillian	Bennett	Arthur	Grey	E/W	2	Buff	E/W	2
Berrington	Ian	Jarvis	Grant	Buff	N/S	5	Blue	E/W	6
Black	Carolyn	Dawkins	Alan	BLUE	E/W	11	Orange	N/S	11
Bloom	Martin	Gill	Peter	Grey	E/W	8	Buff	E/W	8
Bolland	Chris	Coleman	Sandra	Orange	N/S	4	White	E/W	4
Bott	Jana	Cannell	Raymond	Grey	N/S	6	Green	E/W	6
Boughey	Andi	Richardson	Carol	White	E/W	5	Grey	N/S	5
Boughey	Steve	Tarbutt	Andrew	Grey	N/S	3	Green	E/W	3
Bouton	Vicki	Pattison	Ella	Grey	E/W	12	Buff	E/W	12
Braithwaite	Andrew	Braithwaite	Suzie	White	N/S	1	White	N/S	1
Braithwaite	Suzie	Braithwaite	Andrew	White	N/S	1	White	N/S	1
Brash	Ian	Turner	Chris	Blue	E/W	5	Orange	N/S	5
Brayshaw	Simon	Raisin	Matthew	Grey	N/S	12	Green	E/W	12
Brookes	Stephen	Kelly	Adrienne	Buff	N/S	13	Blue	E/W	14
Brookes	Verna	Dawson	Ken	White	E/W	11	Grey	N/S	11
Brown	Hamish	Perfect	Johanna	Grey	N/S	5	Green	E/W	5
Brown	Matthew	Whibley	Michael	Orange	N/S	11	White	E/W	11
Brown	Tania	Ruddell	Neill	Orange	E/W	6	Grey	E/W	6
Brown	Vanessa	Jenner-O'shea	William	White	N/S	13	White	N/S	13
Buckland	Mary	Downward	Trish	Grey	E/W	9	Buff	E/W	9

Burrows	Wayne	Ker	Charles	Orange	E/W	13	Grey	E/W	13
Butts	Joan	Doran	Martin	Orange	N/S	10	White	E/W	10
Buzzard	Greg	Jackson	Marilyn	Grey	N/S	4	Green	E/W	4
Calvert	Sandra	Carryer	Colin	Orange	E/W	14	Orange	E/W	1
Camp	Owen	Shami	Anisia	Green	E/W	7	Buff	N/S	7
Cannell	Raymond	Bott	Jana	Grey	N/S	6	Green	E/W	6
Carryer	Colin	Calvert	Sandra	Orange	E/W	14	Orange	E/W	1
Carter	Patrick	Atkinson	Julie	Blue	E/W	8	Orange	N/S	8
Chapman	Doris	Kearns	John	Blue	E/W	6	Orange	N/S	6
Chen	Gary	Solomon	Richard	Green	E/W	9	Buff	N/S	9
Chen	Jerry	Yang	James	Buff	N/S	6	Blue	E/W	7
Chen	Yuzhong	Yuan	Herman	Blue	N/S	8	Blue	N/S	8
Cheval	Herve	Josnin	Gilles	Blue	N/S	9	Blue	N/S	9
Chiba	Mehboob	Kruiniger	John	Buff	E/W	5	Orange	E/W	5
Clark	Nola	Watt	Russell	White	E/W	13	Grey	N/S	13
Clayton	Cynthia	Mcleod	Judy	Orange	N/S	5	White	E/W	5
Clayton	Ian	Woodhall	Noel	Buff	E/W	6	Orange	E/W	6
Cleaver	Brian	Benham	Peter	White	E/W	4	Grey	N/S	4
Coleman	Sandra	Bolland	Chris	Orange	N/S	4	White	E/W	4
Coles	Brad	Appleton	David	Buff	E/W	2	Orange	E/W	2
Collinge	Peter	Gyde	Cecile	Orange	E/W	8	Grey	E/W	8
Cooper	Deborah	Tomlinson	Paul	Green	N/S	11	Green	N/S	11
Cormack	John	May	David	White	N/S	6	White	N/S	6
Cornell	Michael	Bach	Ashley	White	N/S	2	White	N/S	2
Cottle	Jill	Humphrey	Bill	Blue	E/W	3	Orange	N/S	3
Courtney	Michael	Don	Rosie	Orange	E/W	10	Grey	E/W	10
Coutts	Samuel	Bailey	Sam	Buff	N/S	11	Blue	E/W	12
Coutts	Glenn	Fisher	Blair	Orange	N/S	2	White	E/W	2
Coutts	James	Jacob	Nick	Green	N/S	9	Green	N/S	9
Crichton	Ross	Crichton	Pam	Buff	N/S	10	Blue	E/W	11
Crichton	Pam	Crichton	Ross	Buff	N/S	10	Blue	E/W	11
Crowe-Mai	Kieran	Sebesfi	Bob	Green	N/S	8	Green	N/S	8
Dagg	Dallas	Newton	Mary-Ellen	Orange	E/W	3	Grey	E/W	3
D'arcy	Patrick	Norman	Graeme	Green	N/S	10	Green	N/S	10
Davidson	John	Thompson	Jamie	Blue	N/S	10	Blue	N/S	10
Davies	Kate	Somerville	Anne	Blue	E/W	9	Orange	N/S	9
Dawkins	Alan	Black	Carolyn	Blue	E/W	11	Orange	N/S	11
Dawson	Ken	Brookes	Verna	White	E/W	11	Grey	N/S	11
De Luca	Carol	Henton	Bev	Blue	N/S	5	Blue	N/S	5
Dibley	Chris	Seldon	Michael	Green	E/W	2	Buff	N/S	2
Dick	Alan	Lux	Heini	Orange	E/W	4	Grey	E/W	4
Dive	Russell	Duncan	Gary	Orange	E/W	11	Grey	E/W	11
Don	Rosie	Courtney	Michael	Orange	E/W	10	Grey	E/W	10
Doran	Martin	Butts	Joan	Orange	N/S	10	White	E/W	10

Dormer	Alan	Hopkins	Anthony	White	E/W	1	Grey	N/S	1
Downward	Trish	Buckland	Mary	Grey	E/W	9	Buff	E/W	9
Dravitzki	Pamela	Fechney	Barbara	Orange	N/S	14	Orange	N/S	14
Driscoll	Rona	Driscoll	John	Buff	E/W	9	Orange	E/W	9
Driscoll	John	Driscoll	Rona	Buff	E/W	9	Orange	E/W	9
Duncan	Gary	Dive	Russell	Orange	E/W	11	Grey	E/W	11
Edlin	Verona	Singh	Vanshita	Buff	E/W	13	Orange	E/W	13
England	Michelle	Beale	Philip	Orange	E/W	15	Orange	N/S	15
Evitt	John	Garrison	Ira	Blue	N/S	11	Blue	N/S	11
Eyles	Geoff	Robb	Trevor	Blue	N/S	1	Blue	N/S	1
Fan	Kevin	Wang	Yang	Grey	E/W	7	Buff	E/W	7
Fechney	Barbara	Dravitzki	Pamela	Orange	N/S	14	Orange	N/S	14
Fenwick	Pavla	Morrison	Max	Green	E/W	8	Buff	N/S	8
Fisher	Blair	Coutts	Glenn	Orange	N/S	2	White	E/W	2
Fisher	Elizabeth	Masters	George	Orange	N/S	7	White	E/W	7
Foidl	Gary	Glass	Brett	Blue	E/W	4	Orange	N/S	4
Francks	Stephen	Roberts	Colin	Grey	E/W	11	Buff	E/W	11
Freeland	Paul	Perley	Margaret	Blue	E/W	10	Orange	N/S	10
Freeman-Greene	Robyn	Lacey	Dale	Buff	N/S	3	Blue	E/W	4
Fujimoto	Takako	Katagiri	Mayumi	Grey	N/S	8	Green	E/W	8
Garcia Da Rosa	Rodrigo	Lennon	Jane	Green	N/S	4	Green	N/S	4
Gardiner	Val	Pellegrini	Carlos	Buff	E/W	12	Orange	E/W	12
Garland	Sarah	Stephen	Laura	Green	E/W	11	Buff	N/S	11
Garrison	Ira	Evitt	John	Blue	N/S	11	Blue	N/S	11
Geare	Alan	Phillips	Murray	Orange	N/S	12	White	E/W	12
Genc	Murat	Patterson	John	Green	E/W	6	Buff	N/S	6
Geursen	Lynne	Goffin	Rachael	Green	N/S	7	Green	N/S	7
Gill	Peter	Bloom	Martin	Grey	E/W	8	Buff	E/W	8
Glass	Brett	Foidl	Gary	Blue	E/W	4	Orange	N/S	4
Glass	Eric	Lo	George	Orange	N/S	8	White	E/W	8
Glenn	June	Hamilton	Alan	White	E/W	2	Grey	N/S	2
Glover	Lindsay	Wylie	Moss	Grey	E/W	10	Buff	E/W	10
Glyn	Julian	Glyn	Pamela	Green	N/S	6	Green	N/S	6
Glyn	Pamela	Glyn	Julian	Green	N/S	6	Green	N/S	6
Goffin	Rachael	Geursen	Lynne	Green	N/S	7	Green	N/S	7
Goodman	Stephen	Inglis	Bruce	Green	N/S	2	Green	N/S	2
Goodwin	Tipa	Gray	Ella	White	N/S	12	White	N/S	12
Grant	Alan	Ker	Anthony	Blue	N/S	2	Blue	N/S	2
Gray	Steve	Guy	Lindsey	Grey	N/S	13	Green	E/W	13
Gray	Ella	Goodwin	Tipa	White	N/S	12	White	N/S	12
Gregory	Paula	Johnstone	Michael	White	N/S	7	White	N/S	7
Grenside	Richard	Grenside	Sue	Buff	N/S	9	Blue	E/W	10
Grenside	Sue	Grenside	Richard	Buff	N/S	9	Blue	E/W	10
Griffiths	Nye	Milne	Liam	Blue	N/S	12	Blue	N/S	12

Grigg	Noel	Yule	Kathy	Blue	E/W	14	Blue	E/W	1
Guy	Lindsey	Gray	Steve	Grey	N/S	13	Green	E/W	13
Gyde	Cecile	Collinge	Peter	Orange	E/W	8	Grey	E/W	8
Hamilton	Alan	Glenn	June	White	E/W	2	Grey	N/S	2
Harris	Karen	Sole	Dean	White	E/W	10	Grey	N/S	10
Harris	Rodney	Armstrong	Lucie	Green	E/W	10	Buff	N/S	10
Hawkins	Neil	Lapthorne	Richard	Orange	E/W	16	Orange	E/W	3
Henton	Bev	De Luca	Carol	Blue	N/S	5	Blue	N/S	5
Henwood	Tom	Winiata	Tom	Blue	E/W	13	Orange	N/S	13
Hinge	Simon	Howard	Justin	White	E/W	9	Grey	N/S	9
Hoffmann	Oliver	Luh	Jeffrey	Grey	E/W	4	Buff	E/W	4
Hollands	Peter	Nunn	Tony	Grey	N/S	10	Green	E/W	10
Hopkins	Anthony	Dormer	Alan	White	E/W	1	Grey	N/S	1
Howard	Justin	Hinge	Simon	White	E/W	9	Grey	N/S	9
Hsu	Gina	Alam	Faisal	White	E/W	7	Grey	N/S	7
Huang	Dong	Liu	Jeter	Buff	N/S	4	Blue	E/W	5
Humphrey	Bill	Cottle	Jill	Blue	E/W	3	Orange	N/S	3
Humphries	Susan	Jacob	Steph	White	N/S	11	White	N/S	11
Hurley	Evelyn	Hurley	Bob	Buff	E/W	3	Orange	E/W	3
Hurley	Bob	Hurley	Evelyn	Buff	E/W	3	Orange	E/W	3
Inglis	Bruce	Goodman	Stephen	Green	N/S	2	Green	N/S	2
Jackson	Marilyn	Buzzard	Greg	Grey	N/S	4	Green	E/W	4
Jacob	Nick	Coutts	James	Green	N/S	9	Green	N/S	9
Jacob	Tom	Mace	Brian	Blue	E/W	12	Orange	N/S	12
Jacob	Steph	Humphries	Susan	White	N/S	11	White	N/S	11
Jared	Heather	Johnson	Warren	Orange	N/S	9	White	E/W	9
Jarvis	Grant	Berrington	Ian	Buff	N/S	5	Blue	E/W	6
Jenner-O'shea	William	Brown	Vanessa	White	N/S	13	White	N/S	13
Johnson	Warren	Jared	Heather	Orange	N/S	9	White	E/W	9
Johnston	Bradley	Mitchell	Nikolas	Blue	N/S	4	Blue	N/S	4
Johnstone	Michael	Gregory	Paula	White	N/S	7	White	N/S	7
Jones	Barry	Millington	Jenny	Orange	E/W	1	Grey	E/W	1
Josnin	Gilles	Cheval	Herve	Blue	N/S	9	Blue	N/S	9
Katagiri	Mayumi	Fujimoto	Takako	Grey	N/S	8	Green	E/W	8
Kearns	John	Chapman	Doris	Blue	E/W	6	Orange	N/S	6
Kelly	Adrienne	Brookes	Stephen	Buff	N/S	13	Blue	E/W	14
Kennedy	Patrick	Norris	Geoff	Buff	E/W	7	Orange	E/W	7
Ker	Anthony	Grant	Alan	Blue	N/S	2	Blue	N/S	2
Ker	Kathy	Mcmillan	Murray	Blue	N/S	14	Blue	N/S	14
Ker	Charles	Burrows	Wayne	Orange	E/W	13	Grey	E/W	13
King	Kevin	Sherwood	Ross	Orange	E/W	7	Grey	E/W	7
Kruiniger	John	Chiba	Mehboob	Buff	E/W	5	Orange	E/W	5
Lacey	Dale	Freeman-Greene	Robyn	Buff	N/S	3	Blue	E/W	4
Lange	Trudy	Matskows	Rosemary	Blue	N/S	7	Blue	N/S	7



Lapthorne	Richard	Hawkins	Neil	Orange	E/W	16	Orange	E/W	3
Lawrence	Bob	Woodhead	Ann	Blue	N/S	3	Blue	N/S	3
Lei	June	Ping	Hank	Orange	E/W	12	Grey	E/W	12
Lennon	Jane	Garcia Da Rosa	Rodrigo	Green	N/S	4	Green	N/S	4
Lennon	Phil	Wen	Fuxia	Buff	E/W	8	Orange	E/W	8
Lichtnecker	Setsuko	Bach	Peer	Green	E/W	12	Buff	N/S	12
Lin	Leo	Miao	Clair	Blue	N/S	6	Blue	N/S	6
Lin	Linda	Smith	Malcolm	Buff	N/S	8	Blue	E/W	9
Liu	Andrew	Mcintosh	John	Blue	E/W	2	Orange	N/S	2
Liu	Jeter	Huang	Dong	Buff	N/S	4	Blue	E/W	5
Liu	William	Sun	George	Green	E/W	4	Buff	N/S	4
Lo	George	Glass	Eric	Orange	N/S	8	White	E/W	8
Lofgren	Martin	Skipper	Daniel	Orange	N/S	6	White	E/W	6
Luh	Jeffrey	Hoffmann	Oliver	Grey	E/W	4	Buff	E/W	4
Lux	Heini	Dick	Alan	Orange	E/W	4	Grey	E/W	4
Mace	Brian	Jacob	Tom	Blue	E/W	12	Orange	N/S	12
Maluish	Annette	Mill	Andrew	Grey	E/W	1	Buff	E/W	1
Marr	Bruce	Marr	Merle	Green	N/S	1	Green	N/S	1
Marr	Merle	Marr	Bruce	Green	N/S	1	Green	N/S	1
Martelletti	Karen	Sheridan	Julie	Buff	N/S	7	Blue	E/W	8
Masters	George	Fisher	Elizabeth	Orange	N/S	7	White	E/W	7
Matskows	Rosemary	Lange	Trudy	Blue	N/S	7	Blue	N/S	7
May	David	Cormack	John	White	N/S	6	White	N/S	6
Mcarthur	Lorraine	Morel	Eleanor	White	N/S	4	White	N/S	4
Mccaskill	Peter	Thompson	Jeff	White	E/W	8	Grey	N/S	8
Mcgregor	Anne	Sheehy	Frances	Green	E/W	1	Buff	N/S	1
Mcintosh	John	Liu	Andrew	Blue	E/W	2	Orange	N/S	2
Mcleod	Judy	Clayton	Cynthia	Orange	N/S	5	White	E/W	5
Mcmahon	Charles	Mcmahon	John	White	E/W	6	Grey	N/S	6
Mcmahon	John	Mcmahon	Charles	White	E/W	6	Grey	N/S	6
Mcmillan	Murray	Ker	Kathy	Blue	N/S	14	Blue	N/S	14
Mcneill	Liz	Morin	Cassie	Buff	N/S	2	Blue	E/W	3
Miao	Clair	Lin	Leo	Blue	N/S	6	Blue	N/S	6
Mill	Andrew	Maluish	Annette	Grey	E/W	1	Buff	E/W	1
Miller	Jeff	Stout	Graeme	Grey	E/W	3	Buff	E/W	3
Millington	Jenny	Jones	Barry	Orange	E/W	1	Grey	E/W	1
Milne	Liam	Griffiths	Nye	Blue	N/S	12	Blue	N/S	12
Minchin	Roger	Minchin	Carol	Orange	N/S	16	Orange	N/S	16
Minchin	Carol	Minchin	Roger	Orange	N/S	16	Orange	N/S	16
Mitchell	Nikolas	Johnston	Bradley	Blue	N/S	4	Blue	N/S	4
Mitchell	Dave	Stretton	Sharon	Buff	N/S	12	Blue	E/W	13
Monaghan	Sita	Osborne	Rebecca	White	N/S	9	White	N/S	9
Morel	Eleanor	Mcarthur	Lorraine	White	N/S	4	White	N/S	4
Morin	Cassie	Mcneill	Liz	Buff	N/S	2	Blue	E/W	3

Morrison	Max	Fenwick	Pavla	Green	E/W	8	Buff	N/S	8
Mulley	Chris	Barnes	Ed	Orange	E/W	2	Grey	E/W	2
Nash	Bill	Wallis	Jim	White	E/W	3	Grey	N/S	3
Newton	Mary-Ellen	Dagg	Dallas	Orange	E/W	3	Grey	E/W	3
Newton	Shirley	Wilkinson	Jenny	Orange	E/W	5	Grey	E/W	5
Nicol	Judith	Bannatyne	Pam	Grey	E/W	6	Buff	E/W	6
Norman	Graeme	D'arcy	Patrick	Green	N/S	10	Green	N/S	10
Norris	Geoff	Kennedy	Patrick	Buff	E/W	7	Orange	E/W	7
Nunn	Tony	Hollands	Peter	Grey	N/S	10	Green	E/W	10
Oberdries	Tony	Abraham	Adrian	Grey	N/S	1	Green	E/W	1
Osborne	Rebecca	Monaghan	Sita	White	N/S	9	White	N/S	9
Oyston	Pat	Thirtle	Anita	Orange	N/S	15	Orange	E/W	2
Palmer	Barry	Stuckey	Neil	Orange	N/S	1	White	E/W	1
Parkes	Alan	Stern	Graham	Grey	N/S	2	Green	E/W	2
Patterson	John	Genc	Murat	Green	E/W	6	Buff	N/S	6
Pattison	Ella	Bouton	Vicki	Grey	E/W	12	Buff	E/W	12
Pawson	Judy	Terry	Kate	Green	N/S	12	Green	N/S	12
Peake	Andrew	Ashton	Wendy	Grey	E/W	13	Buff	E/W	13
Pelkman	Rachelle	Wood	Murray	Grey	N/S	11	Green	E/W	11
Pellegrini	Carlos	Gardiner	Val	Buff	E/W	12	Orange	E/W	12
Pemberton	Mike	Wakefield	Graham	Blue	E/W	7	Orange	N/S	7
Perfect	Johanna	Brown	Hamish	Grey	N/S	5	Green	E/W	5
Perley	Margaret	Freeland	Paul	Blue	E/W	10	Orange	N/S	10
Phillips	Murray	Geare	Alan	Orange	N/S	12	White	E/W	12
Ping	Hank	Lei	June	Orange	E/W	12	Grey	E/W	12
Poulgrain	Robert	Ramsey	Peter	Orange	N/S	13	White	E/W	13
Raisin	Matthew	Brayshaw	Simon	Grey	N/S	12	Green	E/W	12
Ramsey	Peter	Poulgrain	Robert	Orange	N/S	13	White	E/W	13
Ranson	Nico	Rhodes	Chris	White	N/S	8	White	N/S	8
Rhodes	Chris	Ranson	Nico	White	N/S	8	White	N/S	8
Richardson	Carol	Boughey	Andi	White	E/W	5	Grey	N/S	5
Riddell	Sylvester	Robertson	Mark	Buff	E/W	11	Orange	E/W	11
Robb	Trevor	Eyles	Geoff	Blue	N/S	1	Blue	N/S	1
Roberts	Colin	Francks	Stephen	Grey	E/W	11	Buff	E/W	11
Robertson	Mark	Riddell	Sylvester	Buff	E/W	11	Orange	E/W	11
Rowe	Susan	Winsor	Cheryl	Orange	N/S	3	White	E/W	3
Ruddell	Neill	Brown	Tania	Orange	E/W	6	Grey	E/W	6
Russell	Douglas	Ackerley	Chris	Green	E/W	3	Buff	N/S	3
Russell	Anne-Marie	Smith	Amanda	Blue	E/W	1	Orange	N/S	1
Schumacher	Timothy	Skipper	David	Green	N/S	13	Green	N/S	13
Sebesfi	Bob	Crowe-Mai	Kieran	Green	N/S	8	Green	N/S	8
Seldon	Michael	Dibley	Chris	Green	E/W	2	Buff	N/S	2
Shami	Anisia	Camp	Owen	Green	E/W	7	Buff	N/S	7
Sheehy	Frances	Mcgregor	Anne	Green	E/W	1	Buff	N/S	1

Shepherd	Harry	Winters	Tony	Green	E/W	13	Buff	N/S	13
Sheridan	Julie	Martelletti	Karen	Buff	N/S	7	Blue	E/W	8
Sherwood	Ross	King	Kevin	Orange	E/W	7	Grey	E/W	7
Simpson	Sam	Simpson	Jo	White	N/S	10	White	N/S	10
Simpson	Jo	Simpson	Sam	White	N/S	10	White	N/S	10
Singh	Vanshita	Edlin	Verona	Buff	E/W	13	Orange	E/W	13
Skipper	John	Skipper	Jane	Buff	E/W	4	Orange	E/W	4
Skipper	Daniel	Lofgren	Martin	Orange	N/S	6	White	E/W	6
Skipper	David	Schumacher	Timothy	Green	N/S	13	Green	N/S	13
Skipper	Jane	Skipper	John	Buff	E/W	4	Orange	E/W	4
Smith	Malcolm	Lin	Linda	Buff	N/S	8	Blue	E/W	9
Smith	Amanda	Russell	Anne-Marie	Blue	E/W	1	Orange	N/S	1
Snow	Jane	Sweetman	Rhondda	Orange	E/W	9	Grey	E/W	9
Sole	Dean	Harris	Karen	White	E/W	10	Grey	N/S	10
Solomon	Richard	Chen	Gary	Green	E/W	9	Buff	N/S	9
Somerville	Anne	Davies	Kate	Blue	E/W	9	Orange	N/S	9
Spencer	Sue	Watt	Leslie	Buff	E/W	10	Orange	E/W	10
Stachurski	Lorraine	Wu	Mindy	Grey	N/S	7	Green	E/W	7
Stephen	Laura	Garland	Sarah	Green	E/W	11	Buff	N/S	11
Stern	Graham	Parkes	Alan	Grey	N/S	2	Green	E/W	2
Stout	Graeme	Miller	Jeff	Grey	E/W	3	Buff	E/W	3
Stretton	Sharon	Mitchell	Dave	Buff	N/S	12	Blue	E/W	13
Stuck	Alistair	Wilson	Russell	Buff	N/S	1	Blue	E/W	2
Stuckey	Neil	Palmer	Barry	Orange	N/S	1	White	E/W	1
Sun	George	Liu	William	Green	E/W	4	Buff	N/S	4
Sweetman	Rhondda	Snow	Jane	Orange	E/W	9	Grey	E/W	9
Takeuchi	Hideko	Asakoshi	Kotomi	Green	N/S	3	Green	N/S	3
Tarbutt	Andrew	Boughey	Steve	Grey	N/S	3	Green	E/W	3
Terry	Kate	Pawson	Judy	Green	N/S	12	Green	N/S	12
Thirtle	Anita	Oyston	Pat	Orange	N/S	15	Orange	E/W	2
Thompson	Jeff	Mccaskill	Peter	White	E/W	8	Grey	N/S	8
Thompson	Jamie	Davidson	John	Blue	N/S	10	Blue	N/S	10
Thomson	Hone	Thomson	Russell	Green	E/W	5	Buff	N/S	5
Thomson	Russell	Thomson	Hone	Green	E/W	5	Buff	N/S	5
Tomlinson	Paul	Cooper	Deborah	Green	N/S	11	Green	N/S	11
Turner	Alan	Yule	Kenneth	Buff	E/W	1	Orange	E/W	1
Turner	Chris	Brash	Ian	Blue	E/W	5	Orange	N/S	5
Wakefield	Graham	Pemberton	Mike	Blue	E/W	7	Orange	N/S	7
Waldvogel	Joan	Wigbout	Max	Grey	E/W	5	Buff	E/W	5
Wallis	Jim	Nash	Bill	White	E/W	3	Grey	N/S	3
Walters	Patsy	Walters	Lee	Blue	N/S	13	Blue	N/S	13
Walters	Lee	Walters	Patsy	Blue	N/S	13	Blue	N/S	13
Wang	John	Young	Alice	Green	N/S	5	Green	N/S	5
Wang	Yang	Fan	Kevin	Grey	E/W	7	Buff	E/W	7

Wang	Bob	Zhu	Jamie	White	N/S	5	White	N/S	5
Watt	Russell	Clark	Nola	White	E/W	13	Grey	N/S	13
Watt	Leslie	Spencer	Sue	Buff	E/W	10	Orange	E/W	10
Wen	Fuxia	Lennon	Phil	Buff	E/W	8	Orange	E/W	8
Whibley	Michael	Brown	Matthew	Orange	N/S	11	White	E/W	11
Whyte	Jan	Yeomans	Carolyn	White	N/S	3	White	N/S	3
Wigbout	Max	Waldvogel	Joan	Grey	E/W	5	Buff	E/W	5
Wilkinson	Jenny	Newton	Shirley	Orange	E/W	5	Grey	E/W	5
Wilson	Russell	Stuck	Alister	Buff	N/S	1	Blue	E/W	2
Winiata	Tom	Henwood	Tom	Blue	E/W	13	Orange	N/S	13
Winsor	Cheryl	Rowe	Susan	Orange	N/S	3	White	E/W	3
Winters	Tony	Shepherd	Harry	Green	E/W	13	Buff	N/S	13
Wood	Murray	Pelkman	Rachelle	Grey	N/S	11	Green	E/W	11
Wood	Carolyn	Young	Robin	White	E/W	12	Grey	N/S	12
Woodhall	Noel	Clayton	Ian	Buff	E/W	6	Orange	E/W	6
Woodhead	Ann	Lawrence	Bob	Blue	N/S	3	Blue	N/S	3
Wu	Mindy	Stachurski	Lorraine	Grey	N/S	7	Green	E/W	7
Wylie	Moss	Glover	Lindsay	Grey	E/W	10	Buff	E/W	10
Yang	James	Chen	Jerry	Buff	N/S	6	Blue	E/W	7
Yeomans	Carolyn	Whyte	Jan	White	N/S	3	White	N/S	3
Young	Robin	Wood	Carolyn	White	E/W	12	Grey	N/S	12
Young	Alice	Wang	John	Green	N/S	5	Green	N/S	5
Yuan	Herman	Chen	Yuzhong	Blue	N/S	8	Blue	N/S	8
Yule	Kathy	Grigg	Noel	Blue	E/W	14	Blue	E/W	1
Yule	Kenneth	Turner	Alan	Buff	E/W	1	Orange	E/W	1
Zhu	Jamie	Wang	Bob	White	N/S	5	White	N/S	5

*Babich*  
**100 YEARS**  
**100 STORIES**

A century of fine winemaking deserves more than one story. To celebrate our centenary, we're sharing 100 stories which have shaped our family's 100 years of innovation, achievement and winemaking excellence.

Discover our stories at [babichwines.co.nz/100stories](http://babichwines.co.nz/100stories)

*Babich*  
 NEW ZEALAND WINE  
 SINCE 1916